



Value Through Partnership

DataEd (Shenzen) Ltd.
ISO9001 – 2000 Qualified by SGS



Data Ed (Salem) Ltd.



Shenzhen, PRC



Index

Corporate Overview

Organization
Profile
Who we serve
Vision and Mission
Commitment to Service

Advanced Technology & Manufacturing

OEM & ODM Subcontractor
SMT & THT Assembly X-Ray Inspection,
BGA & Fine Pitch IC Rework
Testing (ICT, FCT, Ionic Contamination Test...)
"Box build" Assembly

World-class Quality

Quality Management System
Commitment to Quality

Supply Chain Management

Supply Chain Linkage
Global Logistic Map

Specialties & Facilities

China and USA

Contact Us

Contact Information and Maps

Organization Chart

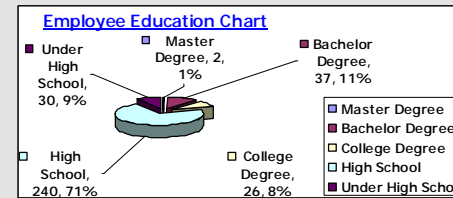
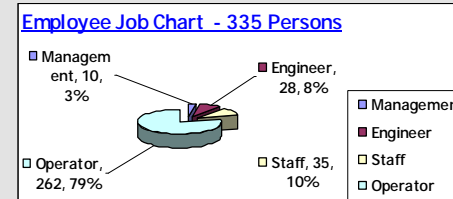
- | | | | |
|-----|----------------------------|----------|---------------------|
| GM | General Manager | DCC | Document Control |
| HR | Human Resources | CS | Customer Service |
| PM | Program Management | FP | Production Planning |
| SMT | Surface Mount Technology | MP | Material Planning |
| THT | Through Hole Technology | WS | Warehouse |
| IDC | Incoming Quality Control | E | Industry Engineer |
| FQC | In Process Quality Control | FE | Production Engineer |
| FQC | Final Quality Control | CriticTE | Test Engineer |
| AI | Automatic Insert | | |
| MI | Manual Insert | | |
| H/S | Hard Solder | | |



**Ted Wu,
General Manager**



**Jim Dugan,
Vice G.M.**



Wen Lu, H.R. & Admin. Dept

- Human Resources
- Logistics
- Customs
- Security

Jojo Wu, Finance Dept.

- Accounting
- Cashier

Daniel Xu, Technical Dept.

- IE
- SMT Engineer
- PE
- TE

Gerry Sha, SMT Section

- SMT A Line
- SMT B Line
- SMT C Line
- SMT X Line

Jimmy He, THT Section

- Preform Line
- THT AI Line
- THT MI Line
- THT H/S Line
- THT Test Line
- THT Assy. Line
- THT Coat Line

Harry Lee, Quality Dept.

- IQC
- IPQC
- FQC

Frank Liu, Management Represent.

- GM Asst.
- System
- DCC

Tommy Lau, Business Unit

- Sales Team
- P.M.
- C.S.

Rich Lee, PMC Section

- PP
- MP
- W/M

Empty, SCM Section

- Sourcing TE
- Commodity A
- Commodity B



Profile

DataEd (Shenzhen) Ltd. – A USA company has operated in Fuyong Town of Shenzhen City since Aug. 2002. We provide electronics manufacturing services and contract manufacturing services to the electronics industry. Our capabilities including surface mount PCB and through hole technologies, cabling and wiring technologies, final “Box build” assembly and full system assembly technologies, and extensive in-circuit and functional testing, burn-in and life test. Whatever your electronics manufacturing and contract manufacturing requirements are, DataEd has the capability to provide all of your worldwide outstanding solutions.



Who we serve

DataEd is focused on providing global, cost-effective and high value manufacturing solutions to the following customer segments:

- Semiconductor Instruments Industry
- Medical Instruments Industry
- Industrial Automatic Control Industry
- Telecom Industry
- Automobile Electronics Industry
- Marine & Leisure Industry
- Civil Aviation Electronics Industry
- Water Pump Industry



Mission

DataEd (Shenzhen) Ltd. offers a cost competitive, global outsourcing solution for manufacturers of high-value products that utilize an advanced electro-mechanical design.

We support the entire lifecycle of a product - from design for manufacturing efficiency to prototyping to local and/or worldwide market product launch and finally to high-mix, low-volume and/or high-volume production.



Vision

Our production facilities in America and China can provide complex printed circuit boards, large-format high power board, enclosure and housing assembly, box build and full system assembly.

The sites are integrated so that programs can be launched in one region and readily expanded to other parts of the global, providing the customer with faster time to market and the opportunity to achieve lower average unit production costs.

Whatever the critical criteria of a program's success - service, time, cost, quality, volume, technology - DataEd can provide best solutions without boundaries.



Commitment to Service

DataEd is committed to providing our customers with best world-class services to meet their needs, through Strategic Partnerships, Customer Focus Team Services, Product and Process Technology:

Strategic Partnerships:

Partnering with fewer suppliers & all customers to achieve world-class value and service.

Customer Focus Team Services:

Dedicated team working and serve for all customers completely.

Product and Process Technology:

Utilizing product and process technology to provide solutions for our customer's current and future needs



Advanced Technology

OEM & ODM

DataEd (Shenzhen) Ltd. can do OEM & ODM business with worldwide customers. As for the latter, from the start, we work closely with customers to determine their exact needs. DataEd Shenzhen & Salem can provide comprehensive front-end engineering services including circuit board layout and design services for efficient manufacturing and testing. We offer quick-turn prototyping, which is the rapid production of a new product sample. Our quick-turn prototype service allows us to provide small test quantities to our customer's product development groups. Our participation in production design and prototyping allows us to reduce our customers' manufacturing costs, time-to-market and time-to-volume. These services enable us to strengthen our relationships with customers that require advanced engineering services.

EMS & CMS

Worldwide Solutions

Provider to Electronics Industry

www.dataed.com



Discuss for prototyping building with customer



SMT & THT Assembly

SMT Assembly Process

Dampproof Cabinet storage/Baking

- PCB Screen Printing
- Mounting
- Reflow
- AOI
- X-Ray Checking (If required)
- PQC



Lead-free Process
WEEE, ROMS



Screen Printing (5 Printer)

DataED is utilizing SEM-688 automatic printing machine with vision system to align the PCB automatically.

(1 SEM688; 1 GKG2; 1 DSP1008;1JKD600)

Solder Paste Height Measurement (1 ADC)

We also setup the programmable LaserVision SP3D system for solder paste height measurement



Mounting (13 Mounter)

4 Mydata (MY12&MY9) Pick and Place System

- 21,000 CPH
- Fine pitch placement at 6,100 CPH.
- Electrical verification of passive components.

1 GC-60D Pick and Place System

- 60,000 CPH
- Two 30-spindle Rotary Lightning Placement Head.
- Component Range: 01005 ~ 30mmx30mm.
- Accuracy: +/-55um@ Cpk1.33.

3 GSM-II Pick and Place System

- Placement Head: Max com. size 150mm (Connector)
- Flexjet 7-Spindle & High Force 4-Spindle
- Accuracy: +/-50um@5Sigma



Mounting (Continued)

5 Universal AC-30L Pick and Place System

- 30-spindle Rotary Lightning Head
- Spec Speed: 30,000CPH (0.12sec)
- Smallest Chip dimension: 0201

DataEd's 5 SMT LINES process systems

- A Line 1MY12+1MY9
- B Line 1MY12+1MY9
- C Line 1AC30+1AC30+1GSMII
- D Line 1GC60D+1AC30L+1GSMII
- E Line 1AC30+1AC30+1GSMII

Capable of handling 01005 passive SMD, BGA, 0.4mm CSP, 0.3mm QFP and odd shape surface mount devices such as shields and connectors. The entire process is capable of handling PCBs as large as maximum 508mm X 635mm area and as thin as 0.5mm minimum thickness.



X-Ray BGA Inspection System

Model: Landrex Verifier X-Ray Machine

- PCB up to 16x18"
- 650x & 5 micron
- Solder Joint (BGA, Leaded)
- Bridging / Voiding / Opens
- Component Package Ins. (Wire Bonds)
- Bare PCB (Inner layers, traces, vias)
- Flip Chip Capable

www.landrex.com



Reflow (5 Reflow Oven)

Reflow Systems

- 5 SMT processes: Clean process, No clean process; Lead, No Lead process.
- The oven temperature can reach 350C degree to meet higher temperature reflow requirements say lead free and flip chip assembly processes.
- Maximum board size 600mm is to be producible now. (3 Nouisstar reflow oven; 2 JT VS1000II)



BGA Rework Capability

Model: RD-500S

II Rework System

www.denondic.co.jp



THT Assembly Process

- Component Prep
- AI (Automatic Insertion)
- Hand Insertion
- Wave Soldering
- Hand Soldering
- Cleaning
- ICT
- FCT
- FQC
- Packaging

Component Prep

- Axial and radial component cutter and former
- IC cutter and former
- Radial crimping equipment
- Different PCB panel cutter

Insertion

- AI work cell (6241D, 6772, CS400)
- 4 manual insertion lines

Wave Soldering

- NOUSSTAR TW4101
- OSAKA
- JT VS1000II



Nousstar TW-4101



Pre-form Machine



6241D & 6772, AI Line



Hand Inserting Line

Cleaning

DataEd has a complete washing system

- 1 DI water plant system with 16 Mega-ohms resistance
- 1 huge water tank with 10 Tons
- 2 big power generators,
- 1 big in-line cleaner named Nu Clean Poly SMT 218,
- 3 ultrasonic equipments, 2 big spray troughs and 1 big oven
- 1 Chemical cleaner machine



Chemical Cleaning



Water Solvable In-Line Machine Cleaning

EMS & CMS

Worldwide Solutions

www.dataed.com



Ultrasonic Cleaning



In-Line Cleaning Machine

Provider to Electronics Industry

Testing

ICT Testing

DataED has 2 sets of In-Circuit Testers including Teradyne Z1800 & GenRad228x, which can conduct both multiple digital and analog tests. Test nodes range from 1 to 3000 points. DataED test engineers have a rich experience in developing and debugging ICT fixtures and programs as well as functional test software and hardware.

- FCT Testing
- Ionic Contamination Testing
- Burn-in and life Testing



EMS & CMS



Worldwide Solutions
www.dataed.com



SCS Ionograph 500M SMDII



Teradyne Z1800 & Z1801



FCT

“Box Build” Assembly

We have 4 assembly lines currently and to be ramp-up per customers’ “box build” assembly requirements with air-condition circumstance.

Our investment in advanced manufacturing equipment and our experience with latest technologies enable us to offer a variety of complex “box build” assembly services.



EMS & CMS



Worldwide Solutions

World-Class Quality

Quality Management System

Servicing

- Handling of inquiries (RFQ/RFI)
- Customer feedback management
- Customer calls

Material Procurement

- Vendor rating system
- Supplier accreditation
- Supplier performance monitoring
- Plant visit (On site verification)

Incoming Inspection

- Incoming inspection
- Batch sampling
- Feedback to customer/supplier

Warehouse & Storage

- Storage condition controlled through air-condition circumstance.
- Monitoring of materials with known expiration dates
- First in first out (FIFO)
- “Zero” Inventory



Production Assembly

- Documented procedures & work instructions
- Trained & qualified operators & inspectors
- Preventive Maintenance System
- Calibration system
- Product identification & traceability
- ESD control
- QC patrol & line monitoring
- Controlled environment
- Audit (1st/2nd/3rd party)
- Tracking system
- Control of nonconforming product



Testing/Shipping

Inspection & Testing

- Industry accepted sampling plans
- In circuit testing
- Functional testing
- Outgoing quality assurance



Packing & Shipping

- Packing qualification to preserve product integrity
- Forwarder/Broker qualification



Commitment to Quality

Quality policy – Zero defect, best service

DataEd is committed to quality leadership and continuous improvement of products and service that offer the best value and meet our customers' requirements with on time delivery.

- ISO9001-2000 certification: Apr. 28 2005.
- Advanced quality tools such as SPC, 5 Sigma,
- 5S, PFMEA, etc. for lowest level defect.
- Provides related warranty to customers for the best quality assurance and after sales service.
- In-process quality tracking system traces quality history and key component date code/ lot number of each board.



Supply Chain Management

Supply Chain Linkage

DataEd supply chain is to manage upstream and downstream relationships with suppliers and customers in order to create enhances value in the final market place at a lower cost to the supply chain as a whole.



Business Model

Material

- Turnkey
- Mixed
- Consignment

Finished Goods

- Domestic Delivery
- Abroad Delivery





Logistics Map

USA (Salem)

Asia (Shenzhen, HK, Taiwan)

SZ Airport (1km)

Fu Yong Ferry (1.5km)

She Kou Ferry (40km)

Hong Kong Airport (100 km)

Material Planning & Control System

DataEd Salem introduced Manex, an advanced ERP system to integrate and optimize material planning & purchasing, production planning, sales and financial analysis and improved much of DataEd's supply chain management level. DataEd is consistently achieving 100% on-time delivery with high inventory turns, thus reducing multiple risks for customers, DataEd, and suppliers. Data Ed (Shenzhen) Ltd., developed QAD eB2 ERP system and run successfully since Oct 2007.





DataEd Specialties

At DataEd, we have the following specialties to meet your outsourcing needs:

Design Review (DFT & DFM)

Our technical staff can assist your organization by suggesting alternate design options and manufacturing cost reductions. We will also develop a delivery schedule that will meet your needs.

Aggressive Quotations

We will provide an aggressive quotation based on your flexible production requirements, high and/or low and/or odd volume, and On time delivery and/or Just-in time deadline.

Quality Products

DataEd will continuously improve its process to better satisfy customer needs and will strive to deliver quality products and services every time.



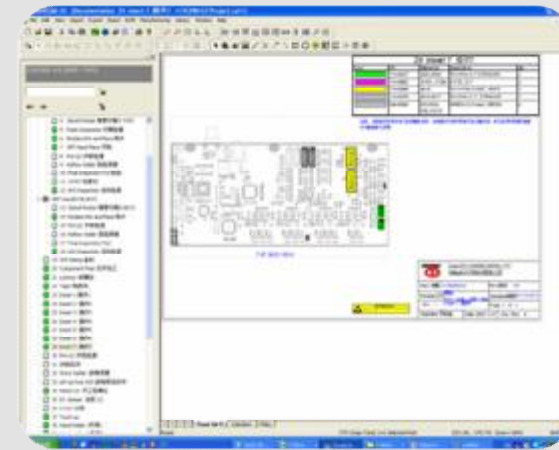
DataEd Specialties

On Time Delivery

Target: 100%

Quick Turn

- AEGIS system is an effective & professional engineering software to make program and all instructions say WI & QI very fast & accurately.
- CFT (Customer Focus Team) will work together with customer closely to develop a full implementation schedule to provide your product when you need it.
- 2 prototype lines is to speed up your NPI products launch faster.



Facilities

China — Core Competency

- OEM & ODM (CMS & EMS)
- Prototyping and/or FA and/or Sample Building
- PCB Assembly – SMT + THT + TEST
- Box Ass'y + System Integration
- DFM (Design for Manufacturability)
- DFT (Design for Test)
- Year 2002 Shenzhen 1st factory center 4000m²
- Year 2010 Shenzhen 2nd factory center 1400 m²
- 5 High speed production lines; 7 Through-hole lines; 1AI Line; 4 Wave Soldering
- 6 Hand soldering production lines; 1 strong and stable washing system
- Strong In-Circuit & Functional Testing systems
- Ionic Contamination Test, Burn-In & Life Test
- Solder Paste High Measurement, X-Ray Inspection, BGA & Fine Pitch IC Rework Station
- ISO9001-2008, SPC, 5Sigma, PFMEA
- Project Management & NPI Management combined ideally



Lead-free Process
WEEE, ROMS
Ready Now!



Contact DataEd

DataEd (Shenzhen) Ltd.

No.7 Building, Xinwei 2nd Industry Area
HuaiDe South Road, Fuyong Town, Bao'An District
Shenzhen, Guangdong, PRC 518103

Phone: 86-755-29924157 or 29608571

Fax: 86-755-29608109

Contact Person:

Ted Wu, General Manager

Jim Dugan, Vice General Manager

Tommy Lau, Business Manager

(0086)13510705379

Email1: pm@dataed.com.cn

Email2: jim.dugan@dataed.com



Awards

07-Dec-2007

Shenzhen Data Science & Technology Co., Ltd.
Edan “2007 Outstanding Supplier” Award

12-Dec-2008

Shenzhen Data Science & Technology Co., Ltd.
Mindray “Outstanding Supplier 2008” Award



Thank You!

**Please visit the following
website to know more.**

www.dataed.com
www.dataed.com.cn

